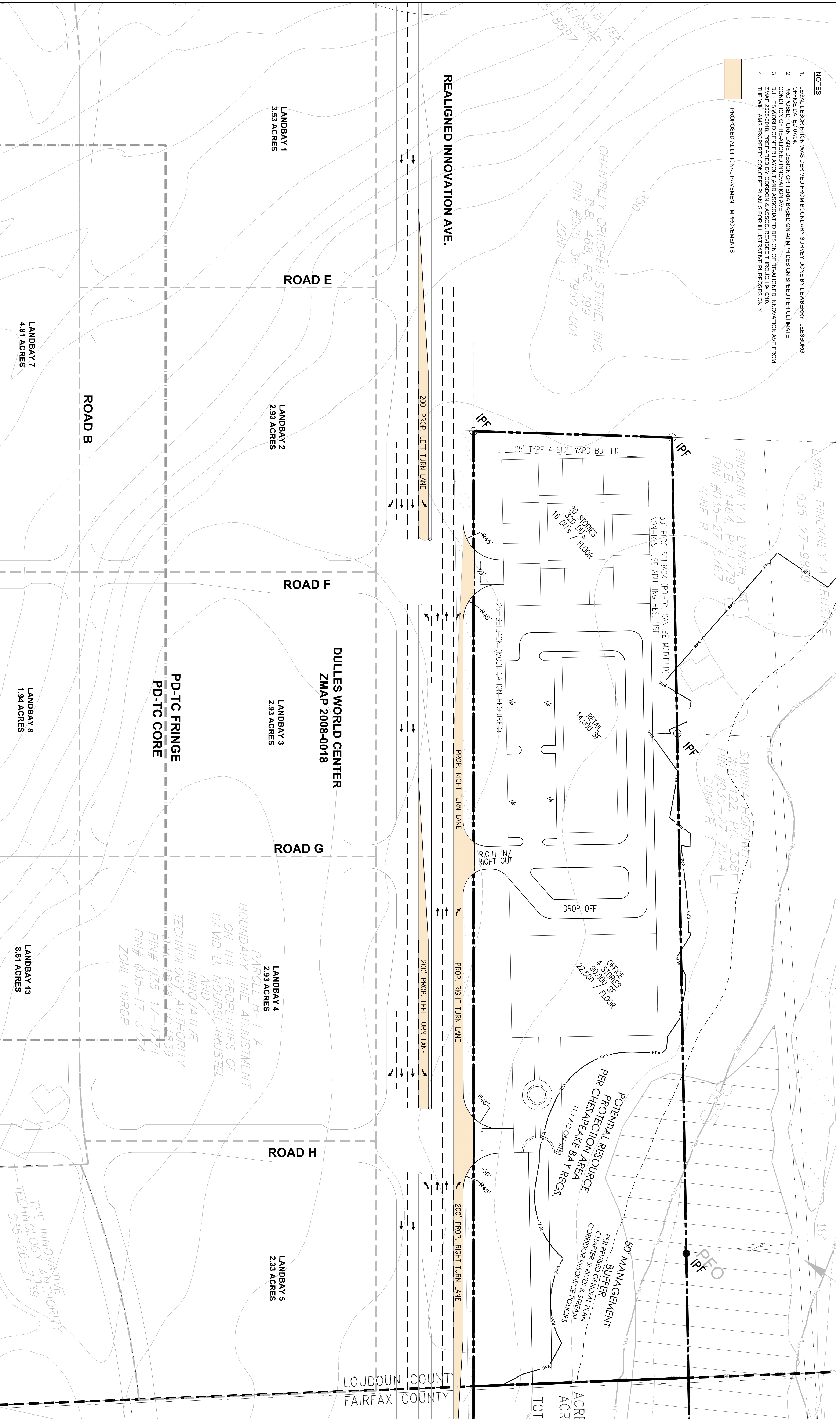


- NOTES**
- LEGAL DESCRIPTION WAS DERIVED FROM BOUNDARY SURVEY DONE BY DEWBERRY-LEESBUNG OFFICE DATED 07/04.
  - PROPOSED TURN LANE DESIGN CRITERIA BASED ON 40 MPH DESIGN SPEED PER ULTIMATE CONDITION OF RE-ALIGNED INNOVATION AVE.
  - DULLES WORLD CENTER LAYOUT AND ASSOCIATED DESIGN OF RE-ALIGNED INNOVATION AVE FROM ZMAP 2008-0018, PREPARED BY GORDON & ASSOC, REVISED THROUGH 9/18/10.
  - THE WILLIAMS PROPERTY CONCEPT PLANS FOR ILLUSTRATIVE PURPOSES ONLY.

PROPOSED ADDITIONAL PAVEMENT IMPROVEMENTS



REALIGNED INNOVATION AVE.

ROAD E

ROAD F

ROAD G

ROAD H

DULLES WORLD CENTER  
ZMAP 2008-0018

PD-T/C FRINGE  
PD-T/C CORE

THE INNOVATIVE  
TECHNOLOGY AUTHORITY  
BOUNDARY LINE ADJUSTMENT  
ON THE PROPERTIES OF  
DAVID B. NOURSI, TRUSTEE  
AND  
THE INNOVATIVE  
TECHNOLOGY AUTHORITY  
D.B. 1848, PG. 1839  
PIN# 035-17-3774  
PIN# 035-17-3774  
ZONE PDRDP

CHANTILLY CRUSHED STONE, INC.  
D.B. 468, PG. 399  
PIN #035-36-7950-001  
ZONE L-1

LYNCH, PINCKNEY A TRUSTEE  
035-27-9889  
PINCKNEY A, LYNCH, JR.  
D.B. 1464, PG. 1779  
PIN #035-27-5767  
ZONE R-1

SANDRA HORWITZ  
W.B. 122, PG. 338  
PIN #035-27-7554  
ZONE R-1

POTENTIAL RESOURCE  
PROTECTION AREA  
(1.1 AC ON SITE)  
PER CHESAPEAKE BAY REGS.

50' MANAGEMENT  
BUFFER  
PER REVISED GENERAL PLAN  
CORRIDOR RESOURCE POLICIES

LOUDOUN COUNTY  
FAIRFAX COUNTY